

← Richtung Winn

Richtung Altdorf →

Entwässerungsabschnitt 5
Versickerung
Bau-km 3+075 - 3+475

Entwässerungsabschnitt 2
Bau-km 3+475 - 4+028

Bauwerk BW 9-1
(BW-Nr. 6534 650)
Best. Straßenüberführung BAB A6
über die St 2240 Lauf - Altdorf

Bauwerk BW 01
(BW-Nr. 6534 529)
Brücke im Zuge der St 2240
über namenlosen Bach

H = 9700,000 m
T = 150,354 m
f = -1,165 m
km = 3+267,309
h TS = 427,863 m

H = 3650,000 m
T = 40,199 m
f = 0,221 m
km = 3+524,497
h TS = 421,711 m

H = 47035,462 m
T = 147,056 m
f = 0,230 m
km = 3+816,715
h TS = 421,134 m

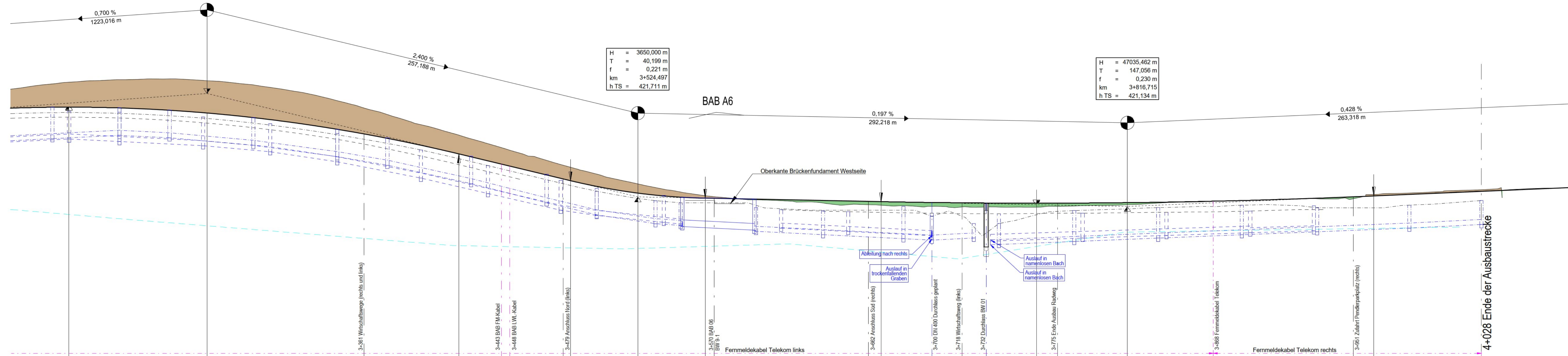
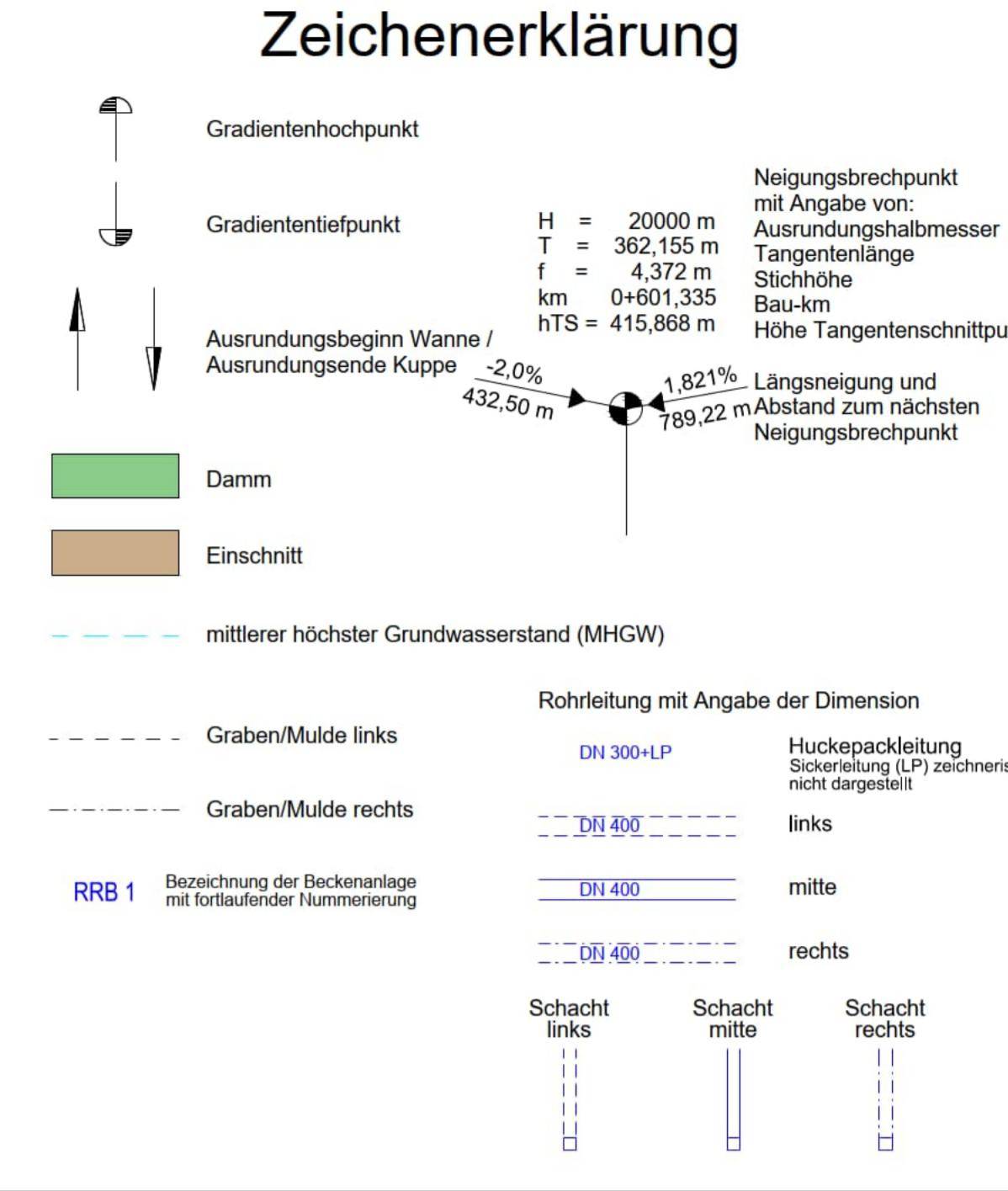
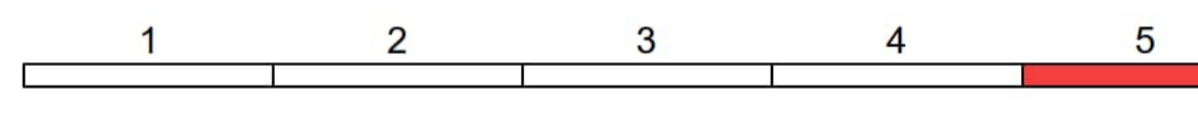
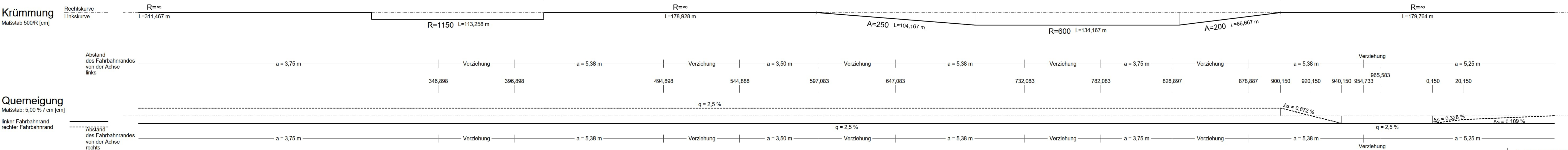


Table with 6 rows: Gradientenlänge, Station Gradiente, Entwässerung links, Entwässerung mitte, Entwässerung rechts, Geländehöhe, Station Gelände. Columns represent stationing from 3+200 to 4+000.



Entwurfsverfasser: WEYRAUTHER INGENIEURGESELLSCHAFT mbH. Includes contact info and a signature.

Staatliches Bauamt Nürnberg. Includes project details, dates, and signatures.

FESTSTELLUNGSENTWURF

Project title: Ausbau Winn - BAB A6 AS Altdorf/Leinburg. Includes address, scale, and date.